



- ✓ reliable
- ✓ innovative
- ✓ competent

✓ DC-Software

KIIP Sofia
Blvd. Hristo Smirnenski, 1
1164 SOFIA
BULGARIEN

DC-Software
Doster & Christmann GmbH
Die Software
für den Grundbau

Rubensstr. 13
D-81245 München

Tel. +49 (89) 89 60 48 33
Fax +49 (89) 89 60 48 18
service@dc-software.de
www.dc-software.de

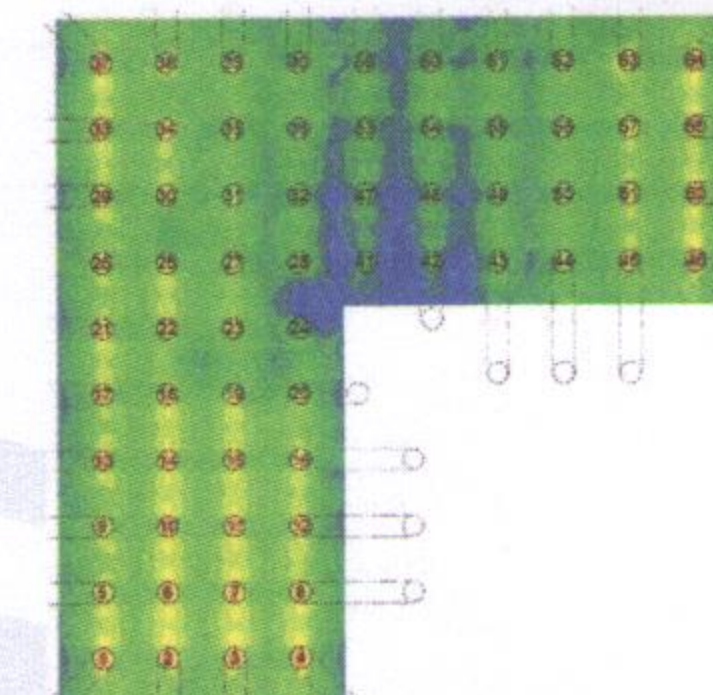
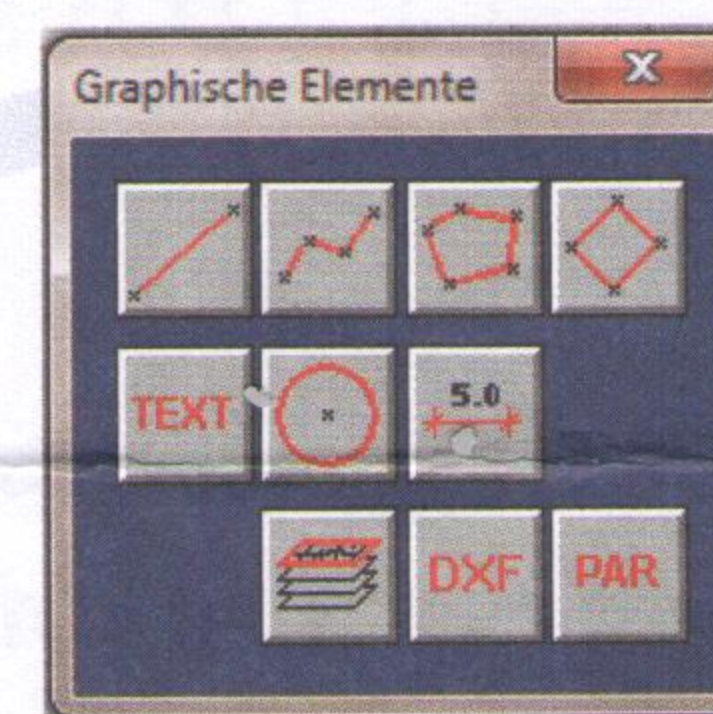
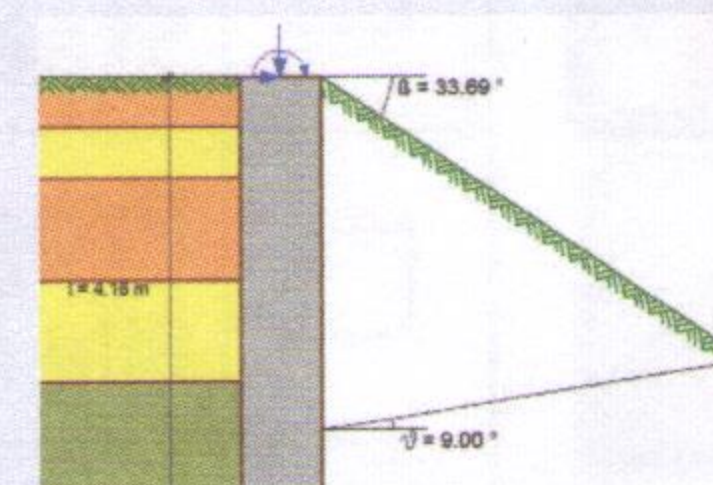
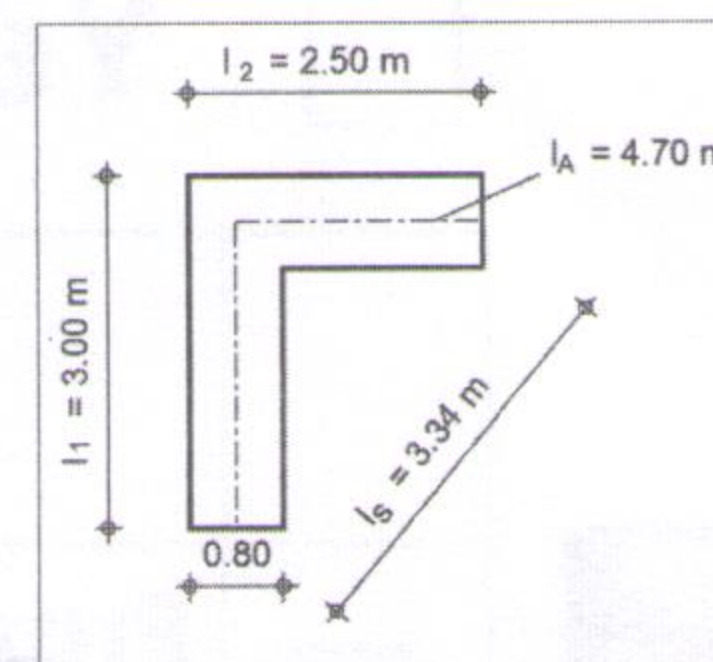
München, 04/12/2017



Dear Sirs,

Santa Claus presents:

- **DC-Lamella 2.0:** now with **corner panels** acc. to Triantafyllidis
- **DC-Pile/Npw:** addition to the program **DC-Pile** for the analysis of piles in slopes, e.g. for noise protection walls, acc. to **ZTV-Lsw 06** / approach by Vogt
- **DC-Pit and DC-Underpinning:** analysis with **earthquake loads** available acc. to **Eurocode 8-5** / Mononobe-Okabe
- **DC-Foundation:** **graphics functions** for drawing and labeling in system and result graphics, import of **DXF files** as a background for the input
- **DC-Pilegroup:** analysis of a **slab with elastic bedding** without piles, output of the req. reinforcement with numbers, **verification against punching** at the pile head
- **DC-Pit:** design of diaphragm walls with **steel bars + ComBAR**, Implementation of a **time step method** for the consideration of **time-dependent deformation of supports** (e.g. supporting reinforced-concrete floors with **creep and shrinkage** deformations) for every construction stage.



(Dr. Eng. Armin Doster)

(Dipl. Eng. Axel Christmann)

*** Informations – Demo versions – Shop – visit us at www.dc-software.com ***

Amtsgericht München
HRB 95721
Geschäftsführer:
Dr.-Ing. Armin Doster
Dipl.-Ing. Axel Christmann
USt-ID: DE 129 323 265
Steuernr.: 143/128/10442