



ДГКМ
ДРУШТВО НА
ГРАДЕЖНИТЕ
КОНСТРУКТОРИ НА
МАКЕДОНИЈА

Партизански одреди 24,
П. Фах 560, 1000 Скопје
Северна Македонија

MASE
MACEDONIAN
ASSOCIATION OF
STRUCTURAL
ENGINEERS

Partizanski odredi 24,
P. Box 560, 1000 Skopje
North Macedonia

subj.-no.

mase@gf.ukim.edu.mk
<http://mase.gf.ukim.edu.mk>

PAPER TITLE

(MAXIMUM TWO LINES, Times New Roman, 14pt, bold, ALL CAPS, 36pt before, 12pt after – Paper's Title Style)

Name SURNAME¹, Name SURNAME² *(Authors Style) 12pt before 12pt after*

ABSTRACT *(Abstract Style) 24pt before 12 after*

Papers should be prepared following the listed general rules below: paper length (including title page, main text, figures, tables, conclusions and references) should be 6, 8 or 10 pages, except for invited papers, which are limited to 14 pages (even number). The text should be written in Macedonian or English language. Full papers will be published in the symposium proceedings e-book, and the book of Abstracts will be published in English as a printed and electronic edition. Authors who prepare their papers in Macedonian language must send an additional first page of the paper in English (authors, paper title, abstract, keywords). The paper's main text should start on the second page with an introduction section. Author/s affiliation and corresponding author e-mail address are listed in the footnote of the first page.

The paper title and the author's name/s should be written in Times New Roman, 14 pt. and 12 pt. respectively, center alignment, single spaced. Abstract text should be written in Times New Roman font, 11 pt., single-spaced and justified *(Abstract Text Style)*. The abstract should be approximately 200 to 300 words (to fill in the first/title page). The abstract should clearly indicate the objectives, scope, results and conclusion of the work presented in the paper. Note that the abstract is the most widely read portion of a manuscript.

The paper should be provided as a Microsoft Word Document and PDF. Please ensure that your document meets the formatting guidelines before submitting it. Specifically, the 'styles' panel in Microsoft Word should be used to apply the correct formatting directly for the titles, section headings, and body text. All Abstracts and final papers must be submitted electronically, following the paper [submission instructions](#) on the website.

Important Dates:

- Abstract submission deadline: March 31, 2025
- Abstract acceptance: April 30, 2025
- Full paper submission deadline: June 30, 2025
- Full paper acceptance: July 31, 2025

Keywords: Keyword1; Keyword2; Keywords should use Times New Roman 10 pt. font; separated by semicolon; Maximum 5 *(Keywords Style)*

¹ (Times New Roman 9pt.), Affiliation, City, Country

² Faculty of Civil Engineering, University "Ss. Cyril and Methodius", Skopje, Republic of North Macedonia

1. HEADING *(Heading 1 Style)*

Headings should be left aligned, written in bold capitals, in Times New Roman font, size 11 pt. The line spacing before the heading should be 12 pt. and 6 pt. after the title.

1.1. Subheading *(Heading 2 Style)*

Subheadings should be left aligned, written in Times New Roman font, size 11 pt. The line spacing before the subheading should be 12 pt. and 6 pt. after the heading.

Minor Heading (Third Level e.g. 1.1.1.) *(Heading 3 Style)*

It should be written in bold letters, and afterwards, the headings should be typed in italic letters. The contribution should contain at most four levels of headings.

Sample Heading (Forth Level e.g. 1.1.1.1.) *(Heading 4 Style)*

2. TEXT

The regular text should be in Times New Roman font, size 11 pt., single-spaced and justified *(Text Style)*. Use 6 pt. spacing before and after each paragraph.

3. TABLES, EQUATIONS AND BULLETS

The paper should be written on an A4 page size, portrait orientation. Information on the margins is provided in Table 1.

Table 1. Margins of the page size A4 in millimeters.

Top	Bottom	Left	Right
25	25	25	25

Tables and table captions should be centered, written in single-spaced Times New Roman font, size 10 pt. A 6 pt. space should separate the table from the surrounding text, the table from the caption, and the caption from the surrounding text.

For equations, the standard settings of Word should be used. All equations should be aligned at 1 cm from the left margin. Number each equation between parentheses on the far right margin. Leave a 6 pt. space above and below the equation to separate it from the surrounding text *(Equation Style)*.

An example is given in Eq.1, and it is recommended to place the equations in tables without borders, as shown in the example below. Equations must be referred to in the text as “Eq. (1)” for one equation or “Eqs. (1), (2) and (3)” for multiple equations. For autonumbering, the equations use the Field number given in the example. If you add equations in the middle of the document or delete equations, the numbers will not automatically be updated. To have them corrected, select all with Ctrl + A, and then press F9.

$$\sigma = E \cdot \varepsilon \quad (1)$$

For bullets, the following format should apply: *(List Bullet Style)*

- The indent of the bullets is 0.5 cm.
- The text starts at 1 cm.
- Don't add space between paragraphs of the same style.

4. FIGURES

It is recommended that the figures have a resolution of 600 dpi. Figures should be arranged in tables without borders, as shown in the example below. The figures and figure captions should be centered and written in 10 pt Times New Roman font *(Figures Style)*. Figure captions should be placed below the

figure, and table captions above the table. Drawings may be in colour since papers will only be published in electronic format. Lettering should be approximately the same size as the text, with a minimum of 2 mm. Lines should preferably be 0.2 mm thick.

Under no circumstance is it acceptable to change the orientation of any page to “Landscape” to accommodate an illustration or exhibit.

Tables and figures should be placed immediately below (or at the first appropriate location) the text where reference is made to them. Each figure should be sequentially numbered and referred to by the respective number in the text, as in “Fig. 3” or in “Fig. 3, 4 and 5”. Similarly, tables should be referred to as “Table 3” or “Tables 3, 4 and 5”. All figures and tables must be referred to and described in the text.

Fig. 1 and Fig. 2 and the captions are arranged in a table with two columns and two rows without borders. Please keep in mind that the full papers will only be available in the digital version.

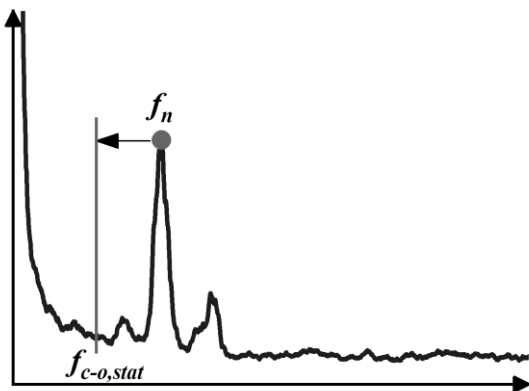


Fig. 1. Diagram



Fig. 2. B&W photograph

ACKNOWLEDGEMENTS *(Optional Heading Style)*

This optional heading should be inserted just before the References heading. Both titles (Acknowledgements and References) are in bold Times New Roman 11 pt., without numbering.

REFERENCES *(Optional Heading Style)*

Please include references prepared according to the instruction below using the *(References style)*. For citing the reference in the text, use the reference number, for example, [1].

Prepare a reference section listing all references in the text's citation order. For more than three authors, use exp. Schmidt et al. For anonymous reports and standards, alphabetize by the issuing institution.

- [1] Ceccotti A., Follesa M. (2006). Seismic Behaviour of Multi-Storey X-Lam Buildings. Proc. of COST E29 International Workshop on Earthquake Engineering on Timber Structures. Coimbra, Portugal, pp. 81-95.
- [2] Follesa M. et al. (2015). A proposal for a new Background Document of Chapter 8 of Eurocode 8. Proc. of the International Network on Timber Engineering Research meeting INTER. Šibenik, Croatia, paper 48-102-1.
- [3] European Committee for Standardization - CEN (2004). Eurocode 8 — Design of structures for earthquake resistance, Part 1: General rules, seismic actions and rules for buildings. Brussels, Belgium.
- [4] Köhler J. (2007). Reliability of timber structures. PhD thesis. IBK ETH Zurich, Zurich, Switzerland.